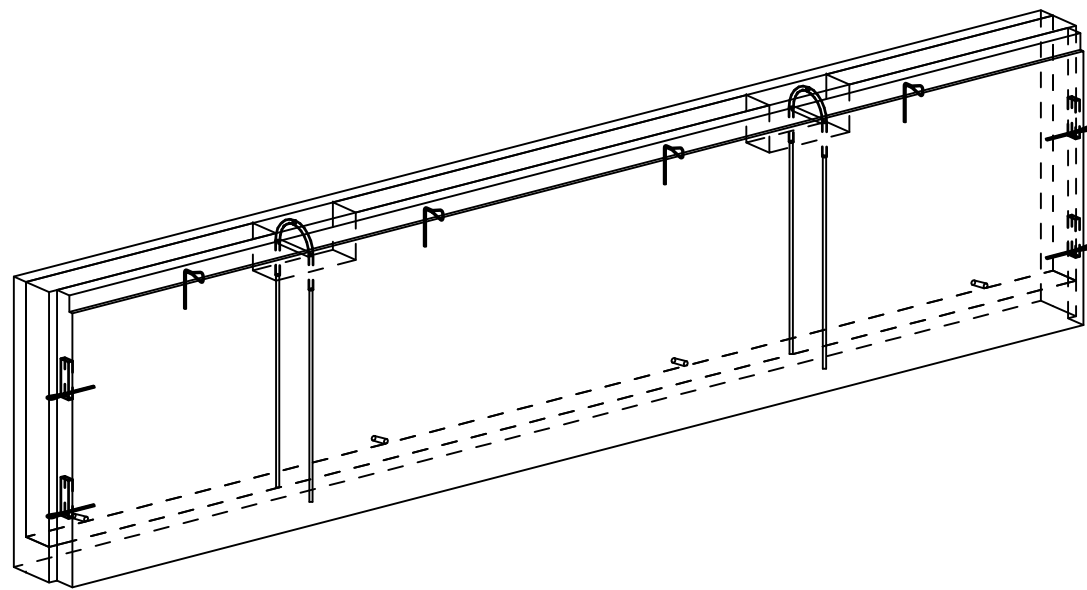


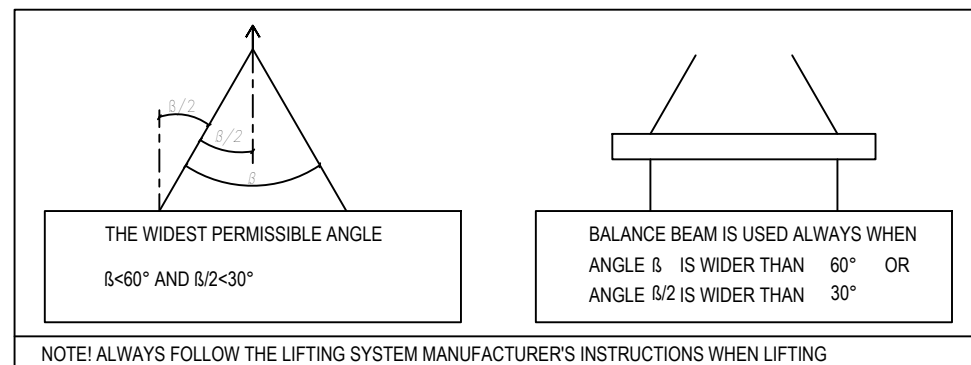
| EMBED LIST | | | |
|--|----------------|---------------------------------|----------------|
| CAST UNIT WEIGHT IS CALCULATED USING CONCRETE VOLUME AND DENSITY 2500kg/m ³ + weight of embedded objects. | | | |
| ELEMENT POSITION | PCS | AREA [m ²] | |
| AR-1 | 1 | 6.29 | |
| CONCRETE | NAME | VALUE | UNIT |
| C30/37 | INNER PANEL | 0.73 | m ³ |
| C35/45 | OUTER PANEL | 0.50 | m ³ |
| ELEMENT TOTAL WEIGHT: | | | 3.10 t |
| VALUE | UNIT | EMBEDS | |
| 2.0 | kpl | PNLF3_E150 alpha max 30° | |
| 4.0 | kpl | PVL80 | |
| 5.4 | m ² | Thermal insulation EPS100 150mm | |
| 4.0 | kpl | PASI-400 | |
| 9.7 | kg | #4-150 4-150-1125/5037 B600KX | |
| 17.1 | kg | #6-150 6-150-1135/4967 B500K | |
| 8.9 | kg | B500B ø10 | |
| 1.9 | kg | B500B ø16 | |
| 15.8 | kg | B600KX ø7 | |

IF THE PRECAST MANUFACTURER WANTS TO REPLACE AN EMBED OR MATERIAL WITH ANOTHER, THE CONSTRUCTION/ELEMENT DESIGNER MUST APPROVE THE CHANGE BEFOREHAND.

3D-VIEW



LIFTING ANGLES



NOTE! ALWAYS FOLLOW THE LIFTING SYSTEM MANUFACTURER'S INSTRUCTIONS WHEN LIFTING

GENERAL INFORMATION

| | | |
|-----------------------|-----------|-------------|
| Planned life time | 50 Years | Inner panel |
| | 50 Years | Outer panel |
| Exposure class | XC1 | Inner panel |
| | XC3,4;XF1 | Outer panel |
| Fire resistance class | R60 | |
| Consequence class | CC2 | |

PRODUCT INFORMATION

| | | |
|------------------------------------|---|---|
| Concrete | C30/37 | SFS-EN 206, SFS 7022 |
| Concrete cover 1 | 30 mm +/- 10 mm Inner panel | |
| Concrete cover 2 | 30 mm +/- 10 mm Outer panel | |
| Max aggregate size | 16 mm Inner panel | 16 mm Outer panel |
| Tolerance class | Measurement class, normal | Betonelementtien toleranssit 2011 |
| Surface treatment 1 | Form face MUO-A | (BY40) |
| Surface treatment 2 | Casting face THI -A | (BY40) |
| Chamfers 1 | Pencil rounding on visible edges (kp) | |
| Lifting strength | C16/20 | |
| Transport and erection strength | C25/30 | |
| Reinforcement bar | T=B500B (SFS 1268), E=B600KX (SFS 1259) | |
| Reinforcement mesh | K=B500K (SFS 1257), E=B600KX (SFS 1259) | |
| Other steel materials: | S=S235JRG2 (SFS-EN 10025-2) | 1.4301 (SFS-EN 10088, AISI 304) |
| tensile strength-/yield strengths: | B500B=550/500 MPa, B600KX 660/600MPa | S235JRG2=360/235 MPa, 1.4301=520/210MPa |
| Extension lengths: | T8-500, T10-650, T12-750, T16-1000 | Meshes, 2 pitches |
| Maximum amount of chloride | SFS 7022 | |

Electrical installations: Betonelementtien sähköasennukset 2012

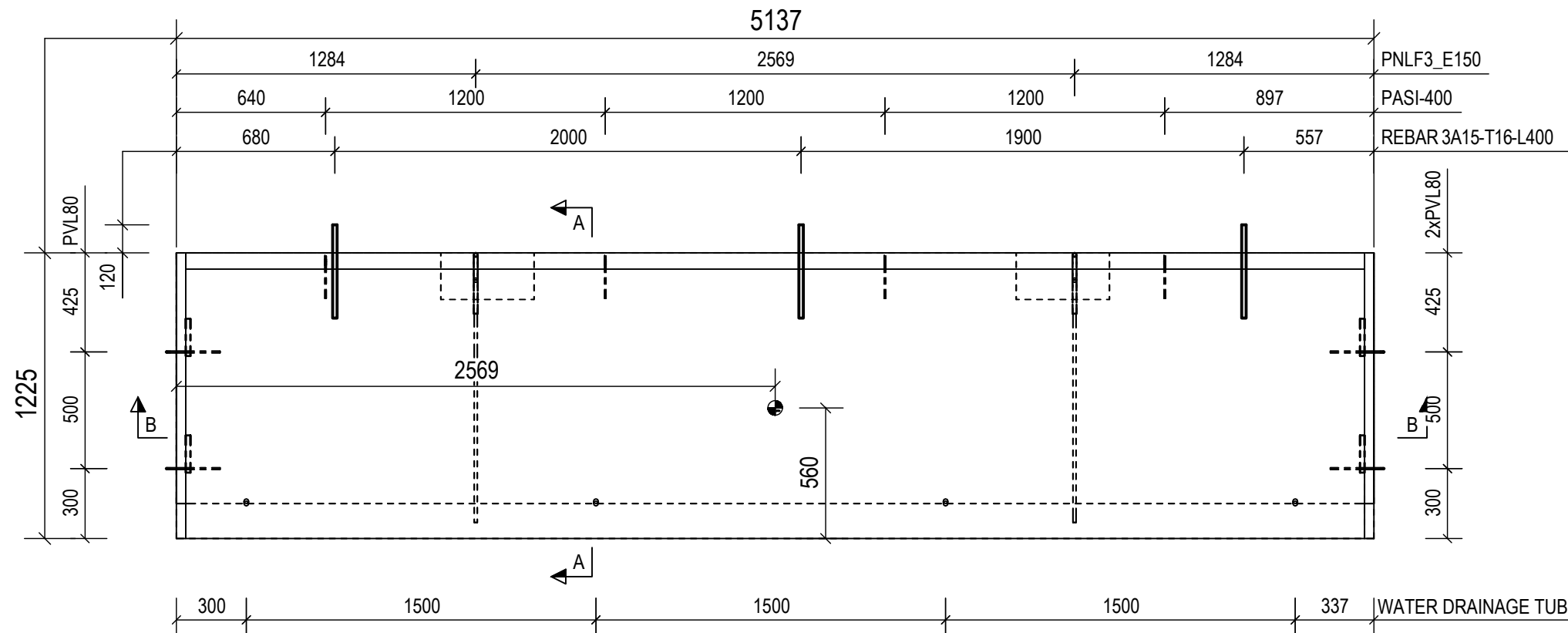
Viewing direction shown in the plan drawing according to the element's ID reading direction from inside to outside.

Normative reference: Wall elements: SFS 7026

Center of Gravity :

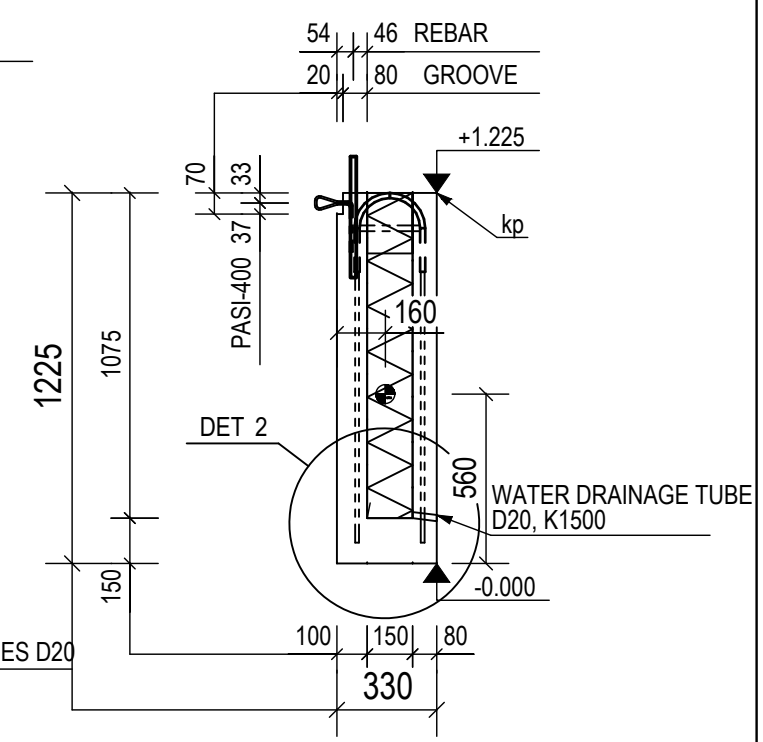
| | | | | |
|---|------------------|------------------|------------|------------|
| PROJECT NAME | | DRAWING CONTENT | | SCALES |
| | | ELEMENT DRAWING | | 1:10 |
| | | AR-1, SOCLE WALL | | 1:20 |
| | | | | 1:25 |
| DRAWER | DESIGNER | | | |
| INITIALS | Education + Name | | | |
| CHECKER | ACCEPTOR | | | |
| Education + Name | Education + Name | | | |
| Designing office Address PO Box Phone www.office.com firstname.lastname@office.com | | PROJECT NUMBER | SUB NUMBER | DWG. NO. |
| | | STR | 1/3 | AR-1 |
| | | DESIGN GROUP | PAGE | DATE |
| | | STR | 1/3 | 20.03.2020 |
| | | | | REVISION |

VIEW FROM THE INSIDE



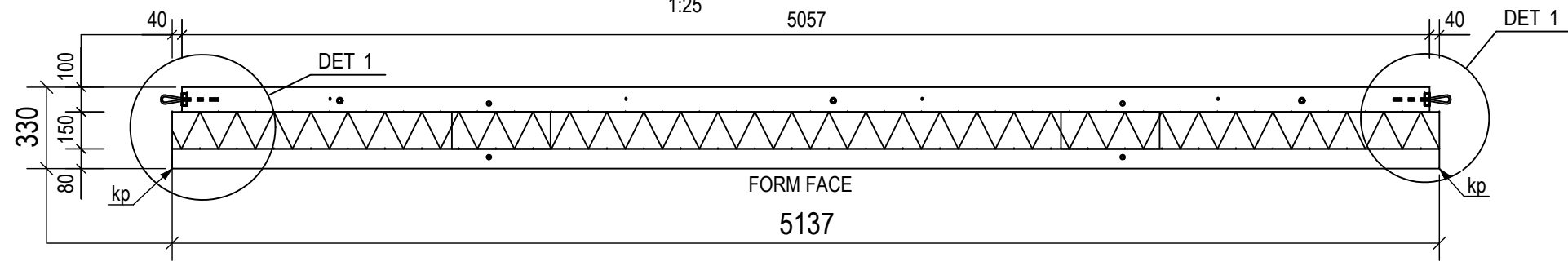
A - A

1:25



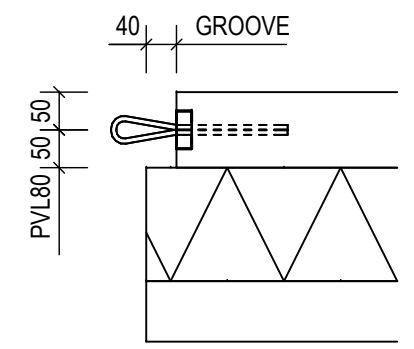
B - B

1:25



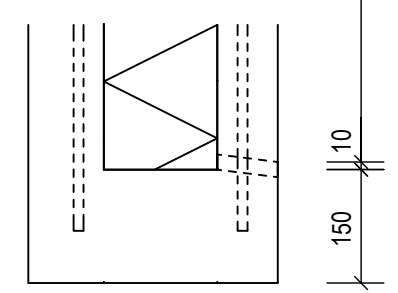
DET 1

1:10



DET 2

1:10



| | | | |
|----------------------|---------------------|---------------|--------------------|
| PROJECT NAME AR-1 | PROJECT NUMBER | SUB NUMBER | DWG. NO. AR-1 |
| | DESIGN GROUP STR | PAGE 2 / 3 | DATE 20.03.2020 |
| | | | REVISI |

| REINFORCING BAR LIST | | | | | | | | | | | | | | | | |
|----------------------|-----|-----|--------|------|------|------|----------|-------------------------|------|-----|---|---|---|---|---|---------|
| REINFORCING BARS | | | | D | L | dL | WEIGHT | BENDING DIMENSIONS [mm] | | | | | | | | COMMENT |
| TYPE | POS | PCS | GRADE | [mm] | [mm] | [mm] | SUM [kg] | a | b | c | d | e | u | v | x | TD |
| D | 2 | 36 | B600KX | 7 | 1040 | | 11.3 | 400 | 280 | 400 | | | | | | 42 |
| D | 6 | 2 | B600KX | 7 | 2310 | | 1.4 | 605 | 1137 | 605 | | | | | | 42 |
| A | 7 | 2 | B600KX | 7 | 5070 | | 3.1 | 5067 | | | | | | | | |
| D | 8 | 2 | B500B | 10 | 2250 | | 2.8 | 606 | 1091 | 606 | | | | | | 46 |
| A | 10 | 2 | B500B | 10 | 4950 | | 6.1 | 4947 | | | | | | | | |
| A | 15 | 3 | B500B | 16 | 400 | | 1.9 | 400 | | | | | | | | |

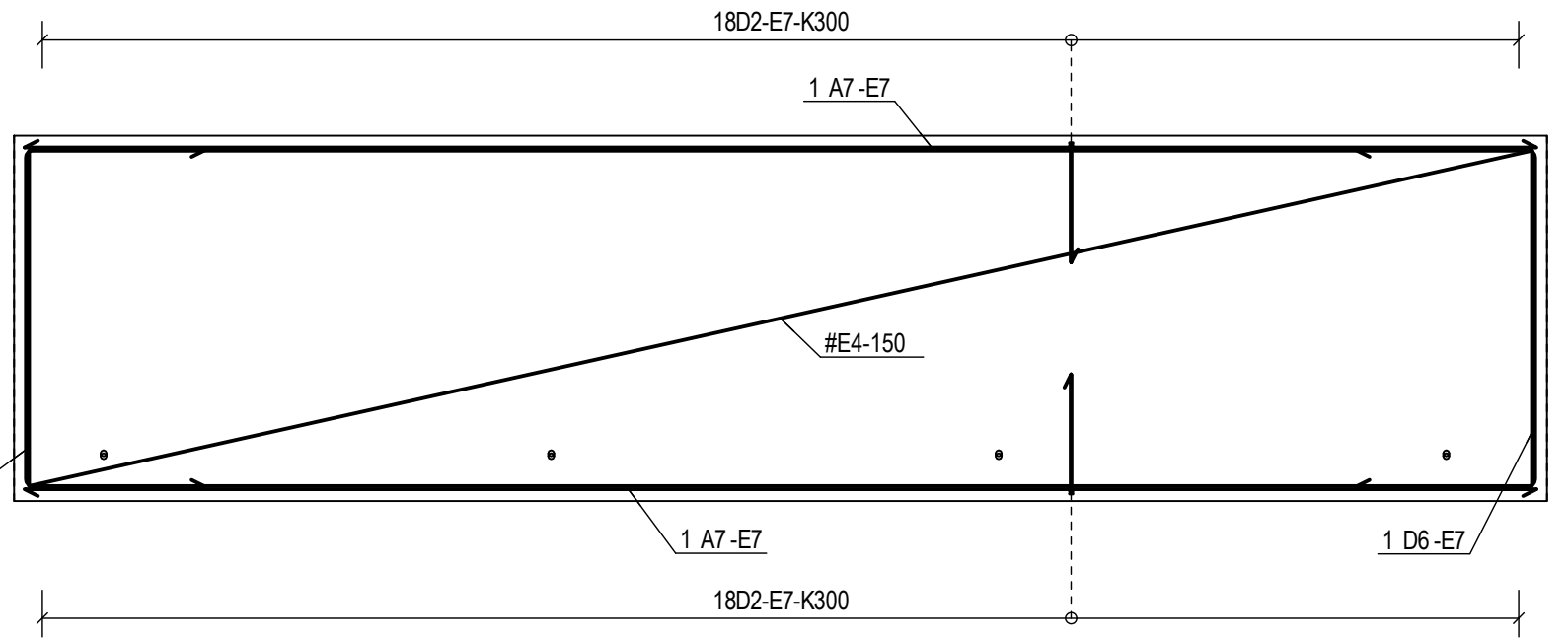
REINFORCING BAR TOTAL WEIGHT [kg]: 26.5

| REINFORCEMENT MESH LIST | | | | | | |
|-------------------------|-----|--------|-------------|--------|---------|--------|
| POS | PCS | GRADE | SIZE | NAME | kg/MESH | kg/SUM |
| AR-4 | 1 | B600KX | 5037 x 1125 | #4-150 | 9.7 | 9.7 |
| AR-11 | 1 | B500K | 4967 x 1135 | #6-150 | 17.1 | 17.1 |

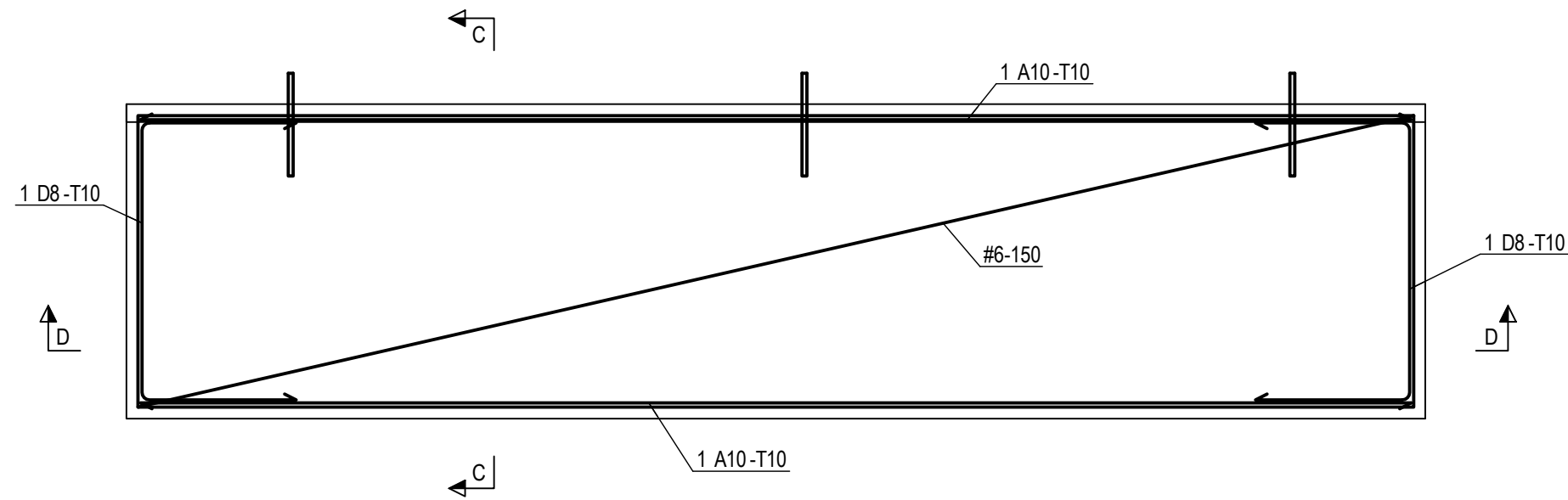
REINFORCEMENT MESH TOTAL WEIGHT [kg]: 26.8

REINFORCEMENT EXAMPLE

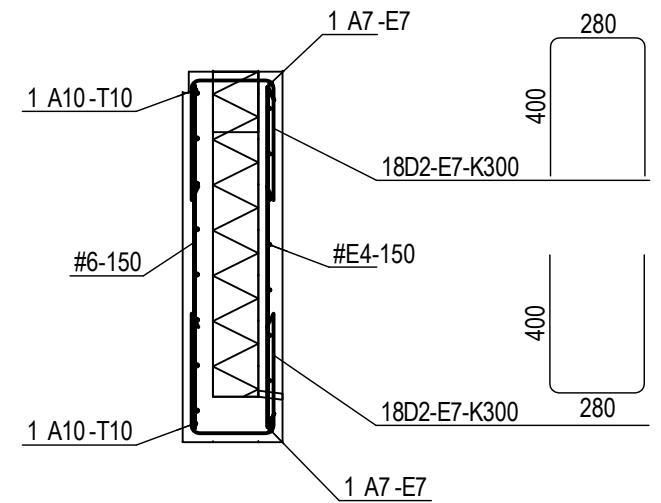
OUTER PANEL REINFORCEMENT



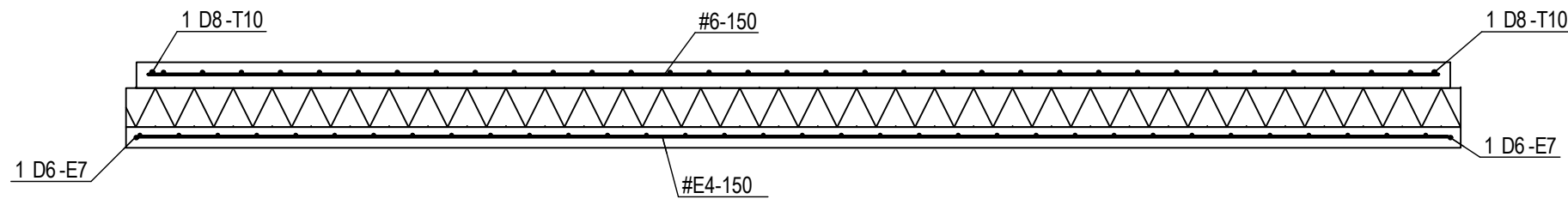
INNER PANEL REINFORCEMENT



C - C
1:25



D - D
1:25



| | | | | |
|----------------------|---------------------|---------------|--------------------|--------|
| PROJECT NAME AR-1 | PROJECT NUMBER | SUB NUMBER | DWG. NO. AR-1 | |
| | DESIGN GROUP STR | PAGE 3 / 3 | DATE 20.03.2020 | REVISI |