

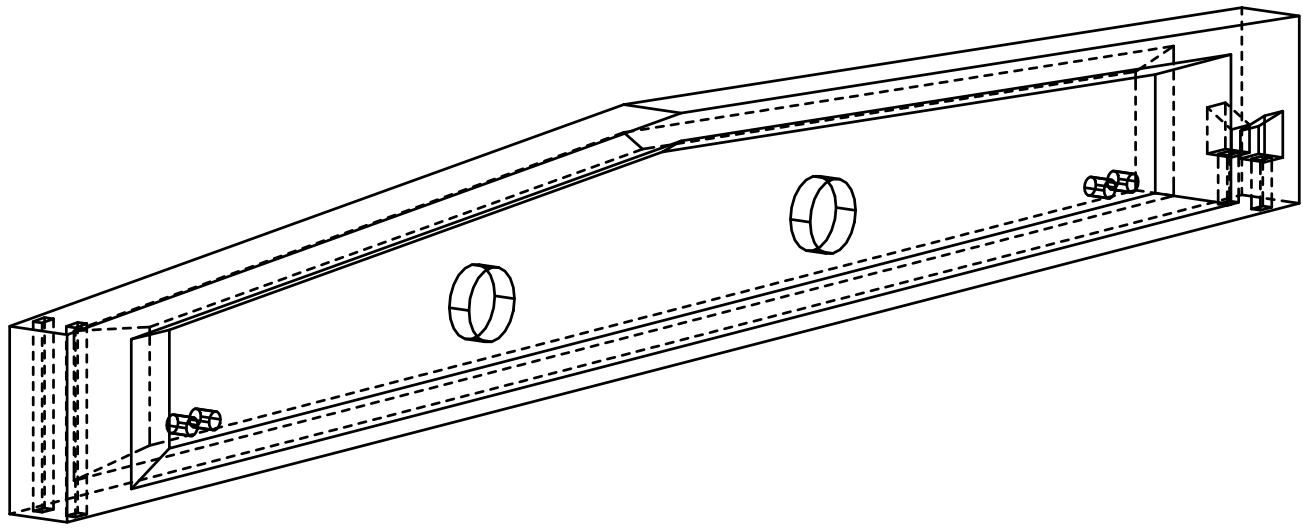
EMBED LIST			
CAST UNIT WEIGHT IS CALCULATED USING CONCRETE VOLUME AND DENSITY 2500kg/m ³ + weight of embedded objects.			
ELEMENT POSITION	PCS	AREA [m ²]	
HI-1	1	12.52	
CONCRETE	NAME	VALUE	UNIT
C40/50	HI_380	2.81	m ³
ELEMENT TOTAL WEIGHT:			7.02 t

GENERAL INFORMATION		
Planned life time	50 years	
Exposure class	XC1	SFS-EN 1992-1-1+NA
Fire resistance class	R60	
Consequence class	CC2	
Product group		

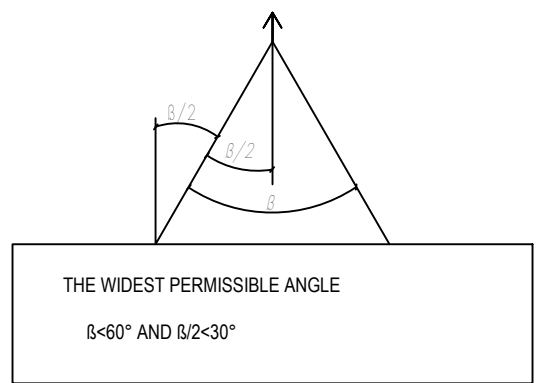
PRODUCT INFORMATION		
Concrete	REINFORCEMENT ACCORDING TO THE PLAN >=C40/50	
Concrete cover 1	25 mm ±10	Nominal value of concrete cover
Tolerance class	Measurement class, normal	Betonielementtien toleranssit, 2011
Surface treatment 1	Form face MUO-A	
Surface treatment 2	Casting face THI-A	
Chamfers 1	15x15 (V)	

Normative reference: Beam and column elements: SFS 7026, SFS-EN 13225
Center of Gravity :

3D-VIEW

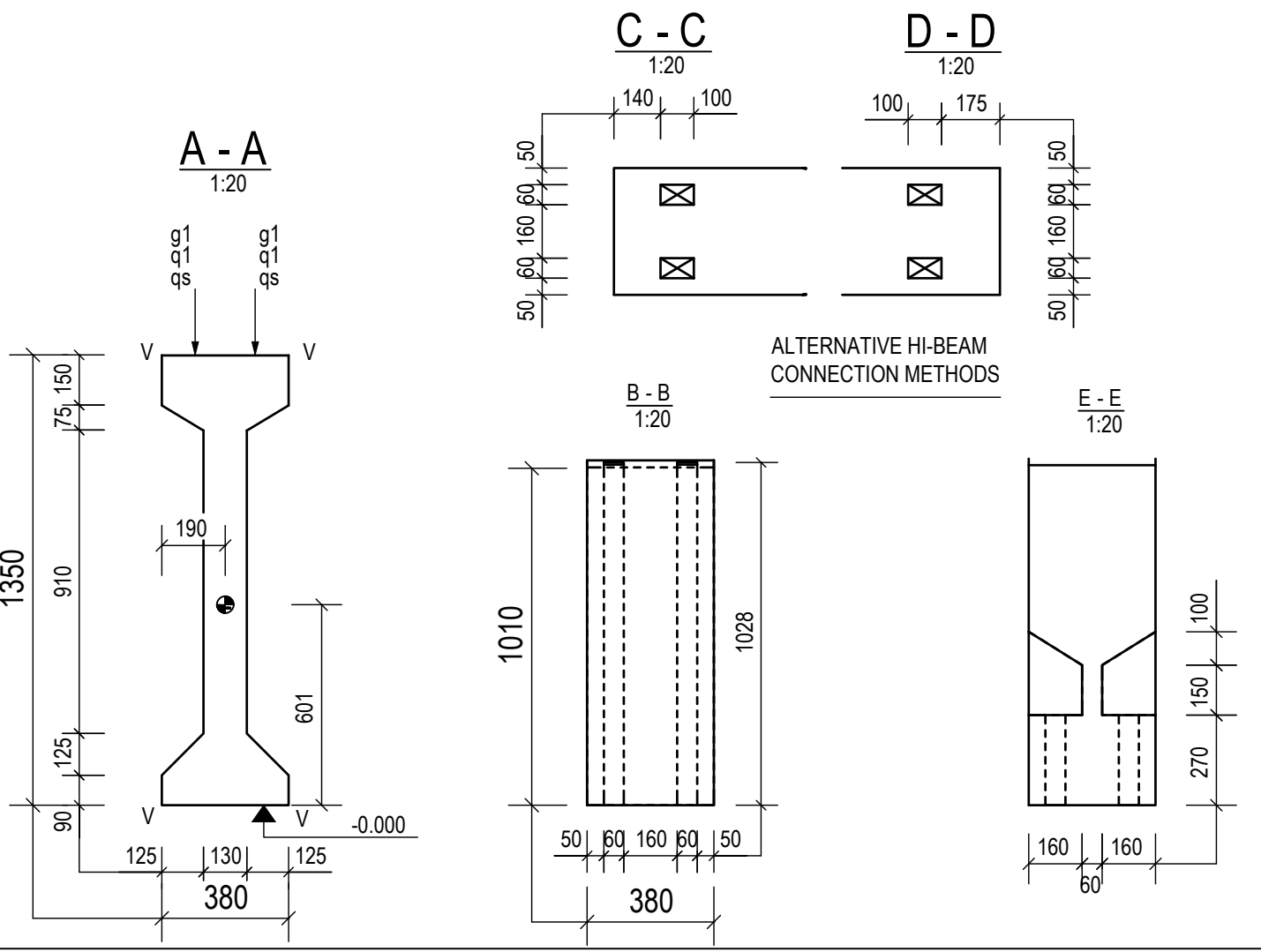
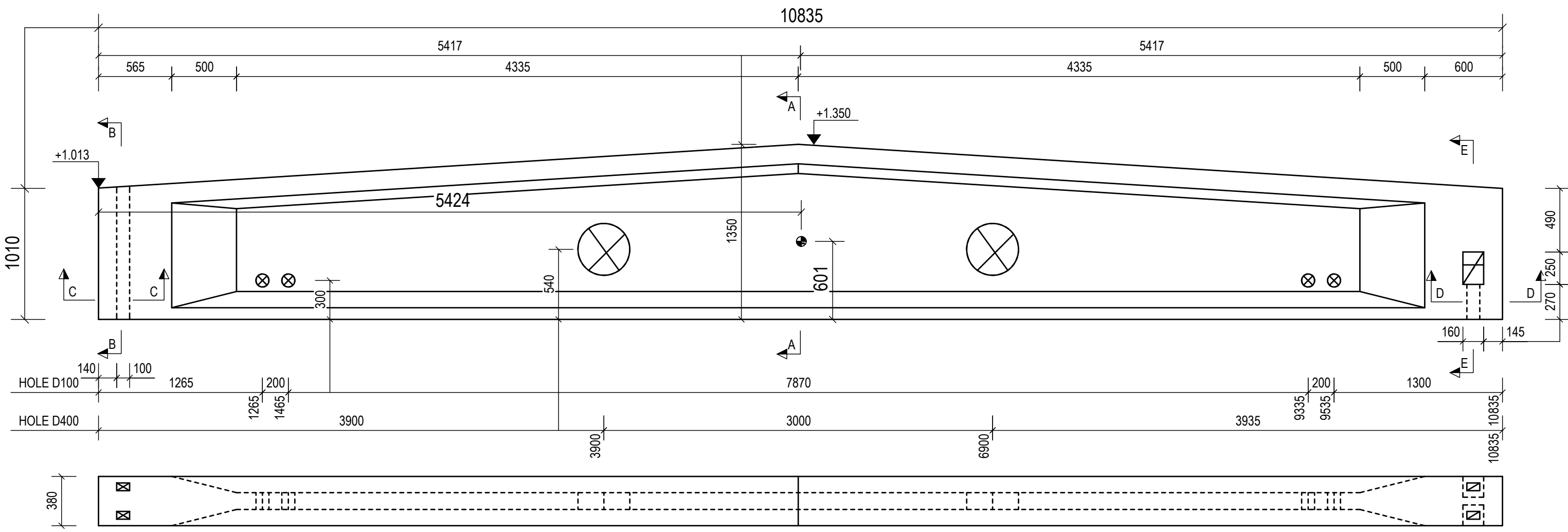


LIFTING ANGLES

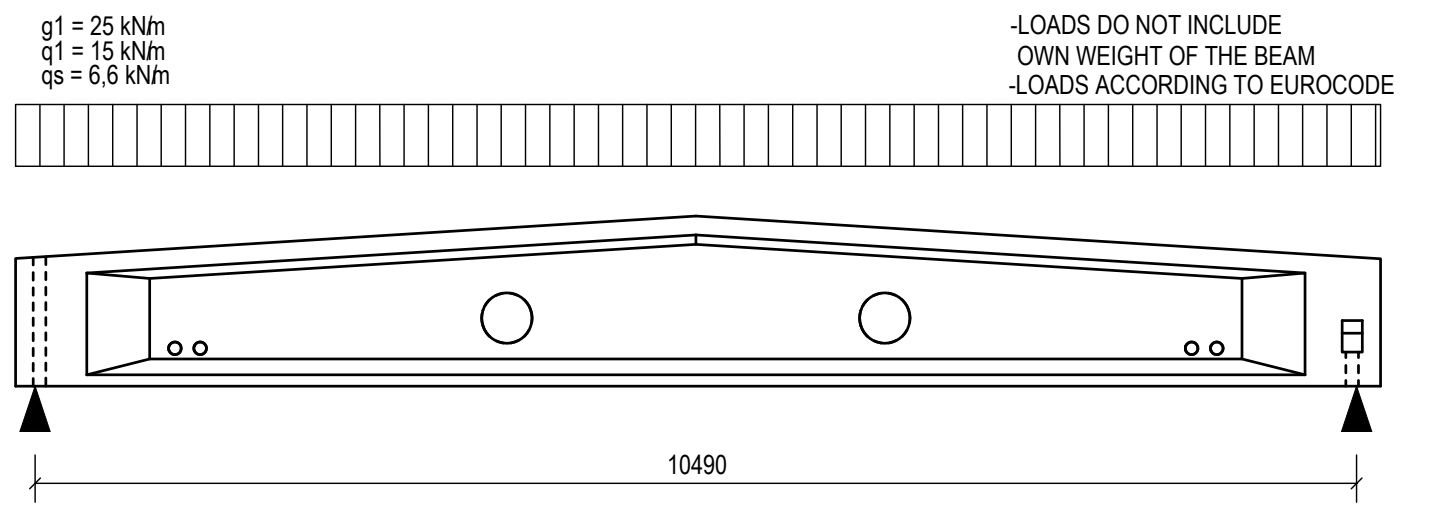


NOTE! ALWAYS FOLLOW THE LIFTING SYSTEM MANUFACTURER'S INSTRUCTIONS WHEN LIFTING

PROJECT NAME		DRAWING CONTENT		SCALES	
		ELEMENT DRAWING		1:20	
		HI-1, HI_380		1:30	
				1:40	
				1:60	
DRAWER	DESIGNER				
INITIALS	Education + Name				
CHECKER	ACCEPTOR				
Education + Name	Education + Name				
www.office.com		PROJECT NUMBER	SUB NUMBER	DWG. NO.	
Designing office Address PO Box Phone firstname.lastname@office.com		RAK	1 / 2	HI-1	
		DESIGN GROUP	PAGE	DATE	REVISION
				20.03.2020	



LOADS



PROJECT NAME	PROJECT NUMBER	PIIR. NRO	REVISION
	DESIGN GROUP	HI-1	
	PAGE	DATE	
	2 / 2	20.03.2020	