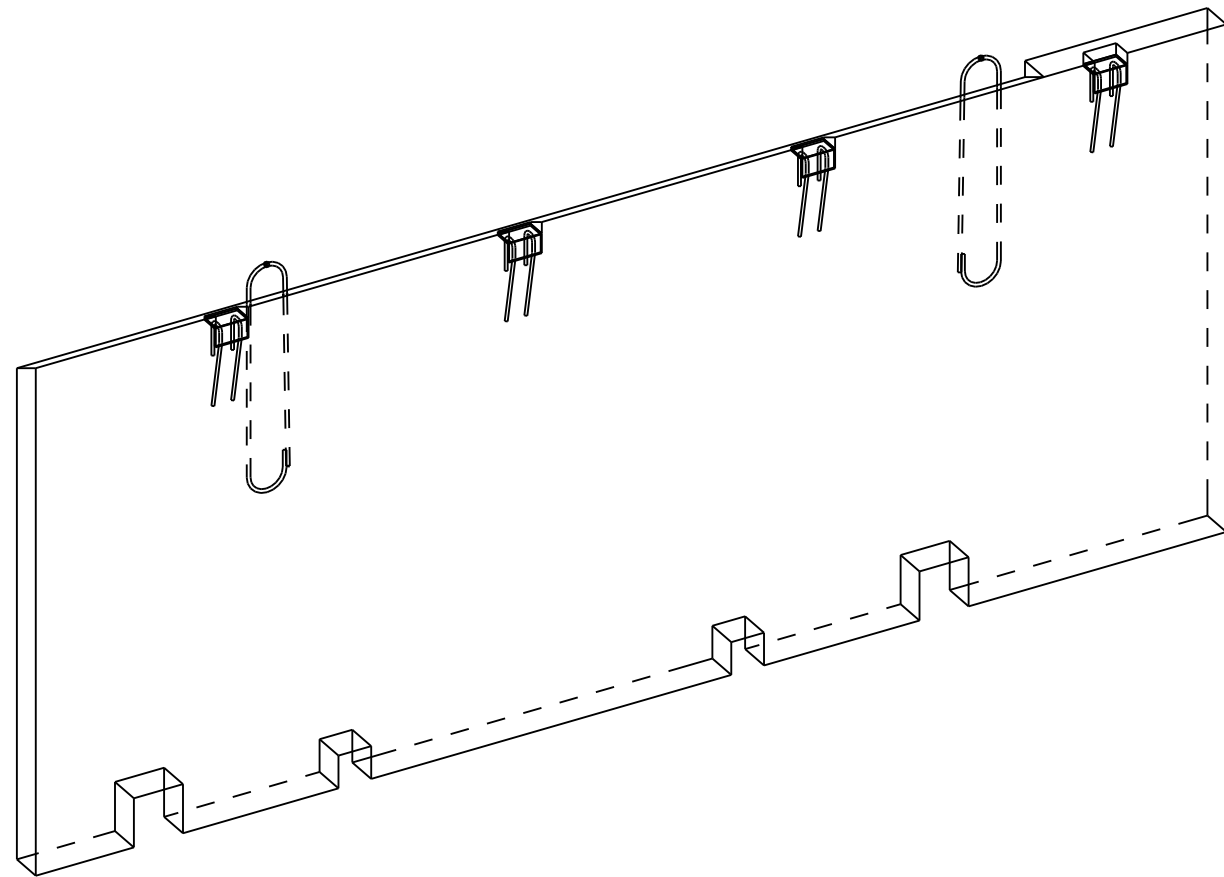
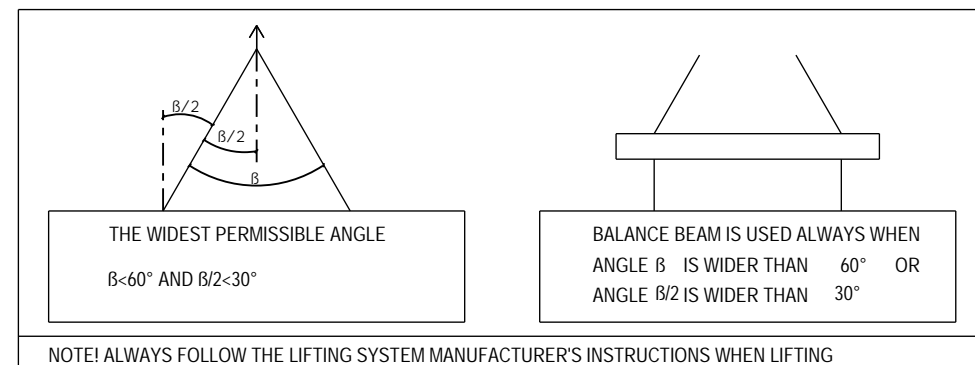


EMBED LIST			
CAST UNIT WEIGHT IS CALCULATED USING CONCRETE VOLUME AND DENSITY 2500 kg/m3 + weight of embedded objects.			
ELEMENT POSITION	PCS	AREA [m2]	
KE-2	1	5.56	
CONCRETE	NAME	VALUE	UNIT
C35/45	SHELL ELEMENT	0.55	m <sup>3</sup>
ELEMENT TOTAL WEIGHT:			1.37 t
VALUE	UNIT	EMBEDS	
2	pcs	PBR_10	
4	pcs	RTRr23	
19.6	kg	#E7-150 7-150.0-3597/1525 B600KX	
12.7	kg	B600KX ø9	

IF THE PRECAST MANUFACTURER WANTS TO REPLACE AN EMBED OR MATERIAL WITH ANOTHER, THE CONSTRUCTION/ELEMENT DESIGNER MUST APPROVE THE CHANGE BEFOREHAND



#### LIFTING ANGLES



#### GENERAL INFORMATION

Planned life time	100 Years	
Exposure class	XC3,4-XS1-XF1	SFS-EN 1992-1-1+NA
Fire resistance class	R60	
Consequence class	CC2	

#### PRODUCT INFORMATION

Concrete	C35/45	SFS-EN 206, SFS 7022
Concrete cover 1	25mm ±10	RST
Max aggregate size	16mm	
Tolerance class	Measurement class, normal	Betonielementtien toleranssit, 2011
Surface treatment 1	Form face MUO-A	
Surface treatment 2	Casting face THI-A	
Chamfers 1	Pencil rounding on visible edges (kp)	
Chamfers 2	(H) Sanded surface	
Lifting strength	C20/25	
Transport and erection strength	C30/37	
Reinforcement bar	T=B500B (SFS 1268), E=B600KX (SFS 1259)	
Reinforcement mesh	K=B500K (SFS 1257), E=B600KX (SFS 1259)	
Other steel materials:	S=S235JRG2 (SFS-EN 10025-2)	1.4301 (SFS-EN 10088, AISI 304)
tensile strength-/yield strengths:	B500B=550/500 MPa, B600KX 660/600MPa	S235JRG2=360/235 MPa, 1.4301=520/210MPa
Extension lengths:	T8-500, T10-650, T12-750, T16-1000	Meshes, 2 pitches
Maximum amount of chloride	SFS 7022	

Electrical installations: Betonielementtien sähköasennukset 2012

Viewing direction shown in the plan drawing according to elements ID reading direction from inside to outside

Normative reference: Wall elements: SFS 7026

Center of Gravity :

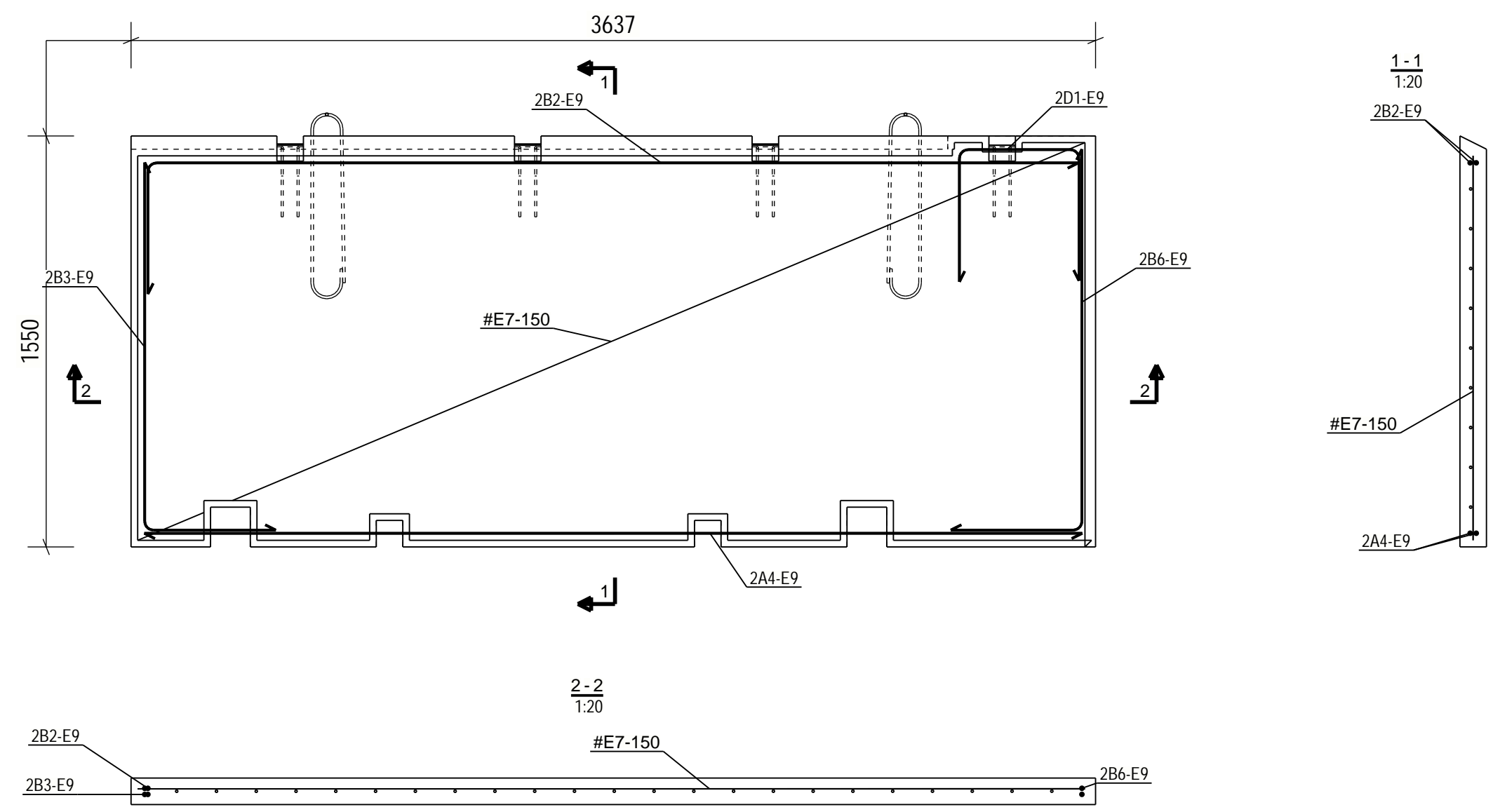
PROJECT NAME		DRAWING CONTENT		SCALES
		ELEMENT DRAWING		1:20
KE-2, SHELL ELEMENT				
DRAWER	DESIGNER			
INITIALS	Education + Name			
CHECKER	ACCEPTOR			
Education + Name	Education + Name			
Designing office Address 12345 Helsinki 020 123 4567 www.office.com firstname.lastname@office.com		PROJECT NUMBER	SUB NUMBER	DWG. NO.
				KE-2
		DESIGN GROUP	PAGE	DATE
		STR		20.03.2020
				REVISION



REINFORCING BAR LIST																
REINFORCING BARS			D	L	dL	WEIGHT	BENDING DIMENSIONS [mm]							COMMENT		
TYPE	POS	PCS	GRADE	[mm]	[mm]	[mm]	SUM [kg]	a	b	c	d	e	u	v	x	TD
D	1	2	B600KX	9	1420		1.4	504	462	500						54
B	2	2	B600KX	9	3990		4.0	3514	500							54
B	3	2	B600KX	9	1870		1.9	1392	500							54
A	4	2	B600KX	9	3540		3.5	3537								
B	6	2	B600KX	9	1920		1.9	1442	500							54
REINFORCING BAR TOTAL WEIGHT [kg]: 12.7																

REINFORCEMENT MESH LIST						
POS	PCS	GRADE	SIZE	NAME	kg/MESH	kg/SUM
KE-5	1	B600KX	1525 x 3597	#E7-150	19.6	19.6
REINFORCEMENT MESH TOTAL WEIGHT [kg]:						19.6

REINFORCEMENT EXAMPLE



PROJECT NAME KE-2	PROJECT NUMBER	SUB NUMBER	DWG. NO. KE-2	
	DESIGN GROUP RAK	PAGE 3 / 3	DATE 20.03.2020	REVISI