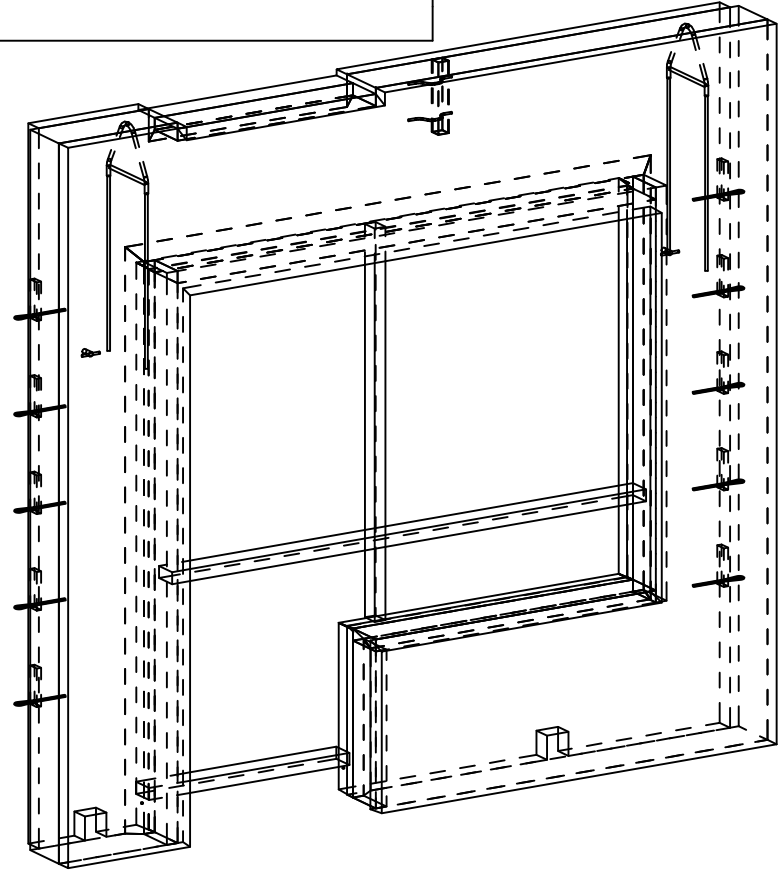
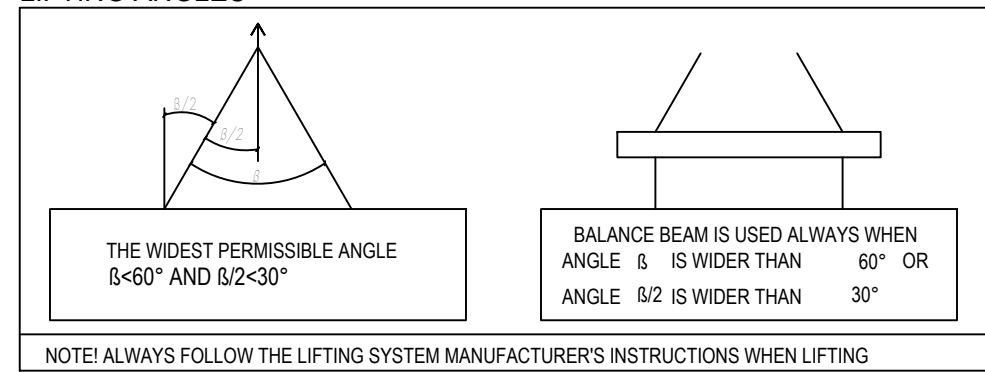


EMBED LIST			
CAST UNIT WEIGHT IS CALCULATED USING CONCRETE VOLUME AND DENSITY 2500kg/m ³ + weight of embedded objects.			
ELEMENT POSITION	PCS	AREA [m ²]	
R-1	1	5.75	
CONCRETE	NAME	VALUE	UNIT
C30/37	INNER PANEL	0.45	m ³
C30/37 WEATHER PROOF	OUTER PANEL	0.40	m ³
ELEMENT TOTAL WEIGHT:			2.29 t
VALUE	UNIT	EMBEDS	
2.0	kpl	PNLF2_E220 alpha max 30°	
10.0	kpl	PVL80	
2.0	kpl	Vemo VASB M16x50 S355JO+N	
2.0	kpl	AnchorRebar D8 L=231mm A500HW	
1.0	kpl	KAPU 202 P50X50X3 L=300mm S235J0	
1.0	kpl	TRANSPORT SUPPORT 50X75 L=1630mm C24	
1.0	kpl	TRANSPORT SUPPORT 50X100 L=930mm T24	
8.3	jm	FRAME TREE 175X50 C24	
0.9	jm	TRESHOLD TREE 50X175 DURABLE WOOD	
2.2	jm	FALL PROTECTION 50X100 C24	
5.5	m ²	THERMAL INSULATION PAROC_COS5ggt 220MM	
25.0	kg	IP 8-150-2935/3159 B500K	
20.1	kg	OP 7-150-2915/3219 B600KX	
17.5	kg	B500B ø10	
7.2	kg	B500B ø16	
0.5	kg	B600KX ø7	
13.3	kg	B600KX ø9	

IF THE PRECAST MANUFACTURER WANTS TO REPLACE AN EMBED OR MATERIAL WITH ANOTHER, THE CONSTRUCTION/ELEMENT DESIGNER MUST APPROVE THE CHANGE BEFOREHAND.



LIFTING ANGLES



GENERAL INFORMATION

Planned life time	50 years	Inner panel
	50 years	Outer panel
Exposure class	XC1	Inner panel
	XC3,4;XF1	Outer panel
Fire resistance class	R60	
Consequence class	CC2	

PRODUCT INFORMATION

Concrete	C30/37	SFS-EN 206, SFS 7022
Concrete cover 1	30 mm +/- 10 mm Inner panel	
Concrete cover 2	30 mm +/- 10 mm Outer panel	
Max aggregate size	16 mm Inner panel	16 mm Outer panel
Tolerance class	Measurement class, normal	Betonielementtien toleranssit 2011
Surface treatment 1	Form face MUO-A (outer)	(BY40)
Surface treatment 2	Casting face THI -A (Inner)	(BY40)
Chamfers 1	Pencil rounding on visible edges (kp)	
Lifting strength	C16/20	
Transport and erection strength	C25/30	
Reinforcement bar	T=B500B (SFS 1268), E=B600KX (SFS 1259)	
Reinforcement mesh	K=B500K (SFS 1257), E=B600KX (SFS 1259)	
Other steel materials:	S=S235JRG2 (SFS-EN 10025-2)	1.4301 (SFS-EN 10088, AISI 304)
tensile strength-/yield strengths:	B500B=550/500 MPa, B600KX 660/600MPa	S235JRG2=360/235 MPa, 1.4301=520/210MPa
Extension lengths:	T8-500, T10-650, T12-750, T16-1000	MESHES, 2 pitches
Maximum amount of chloride	SFS 7022	

Electrical installations: Betonielementtien sähköasennukset 2012

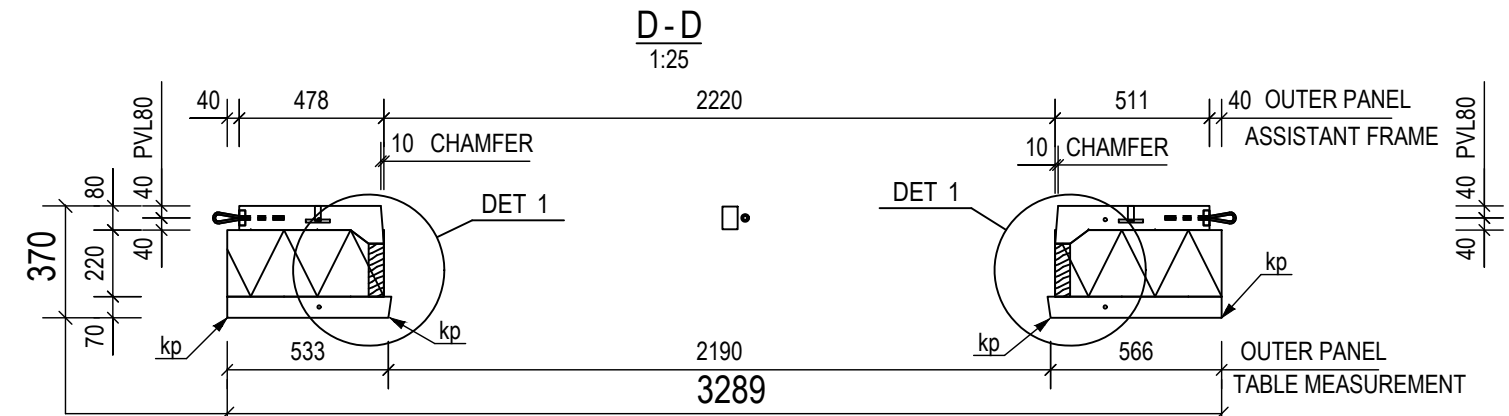
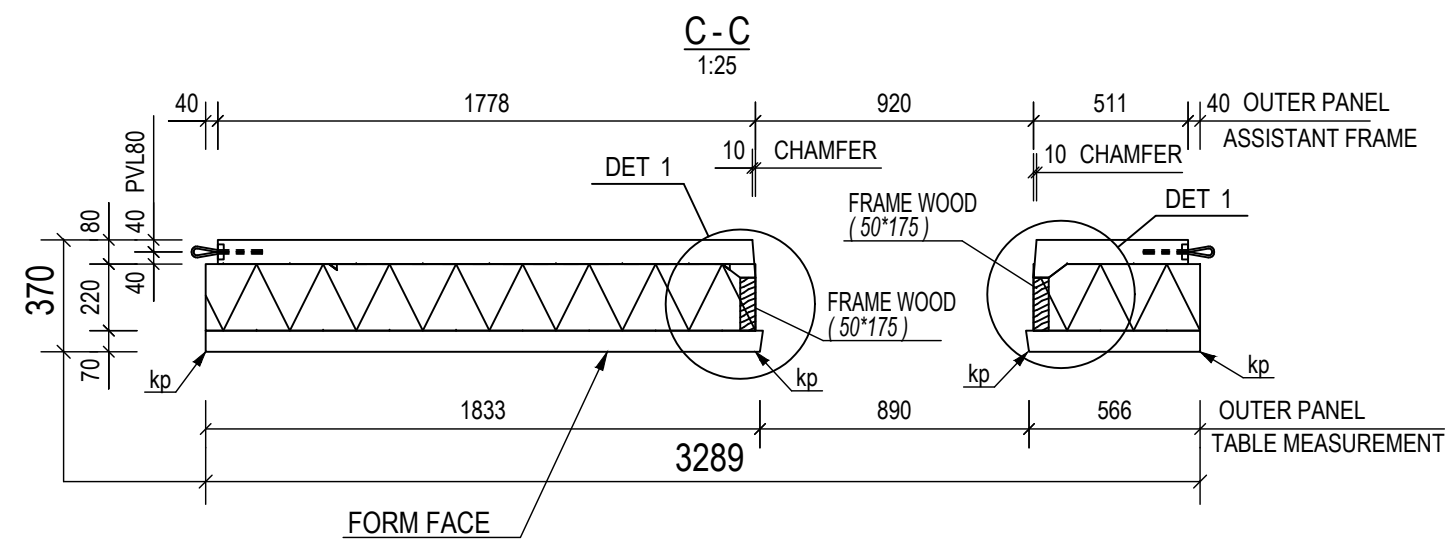
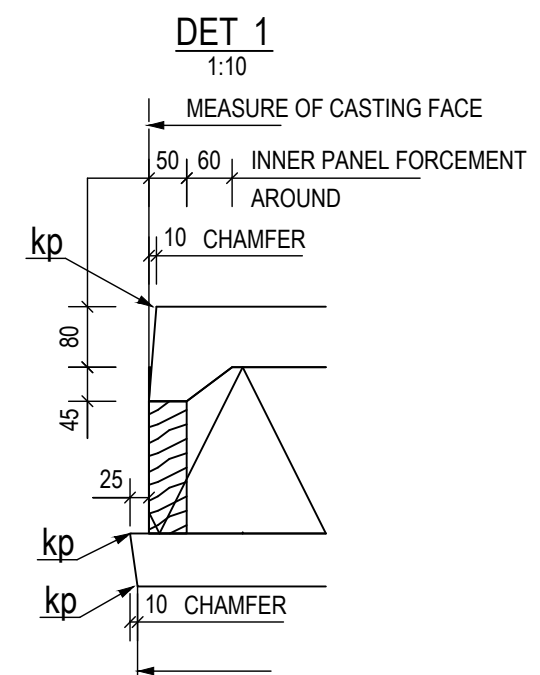
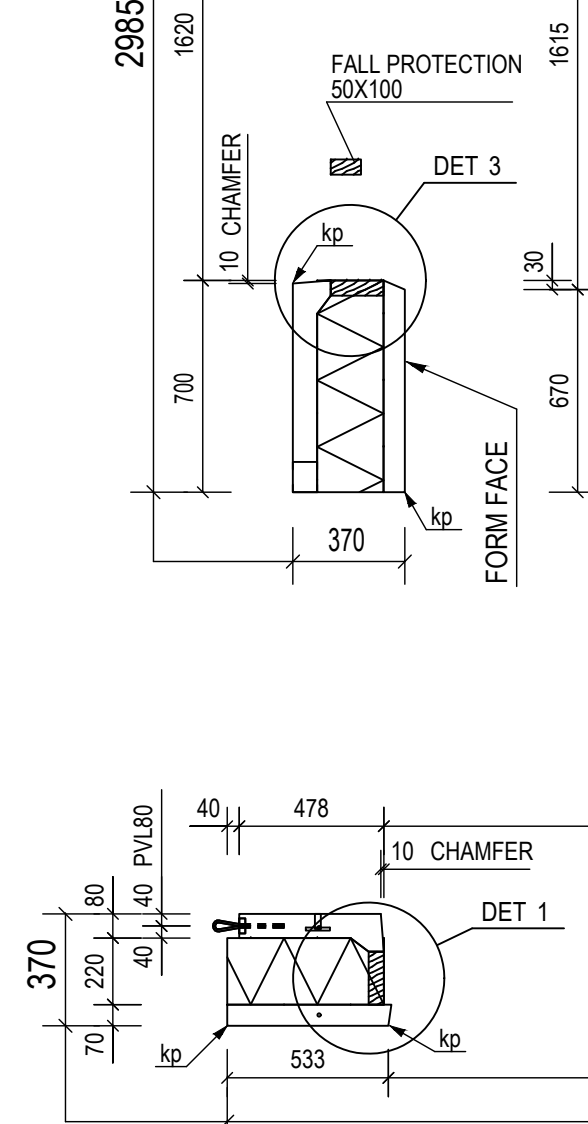
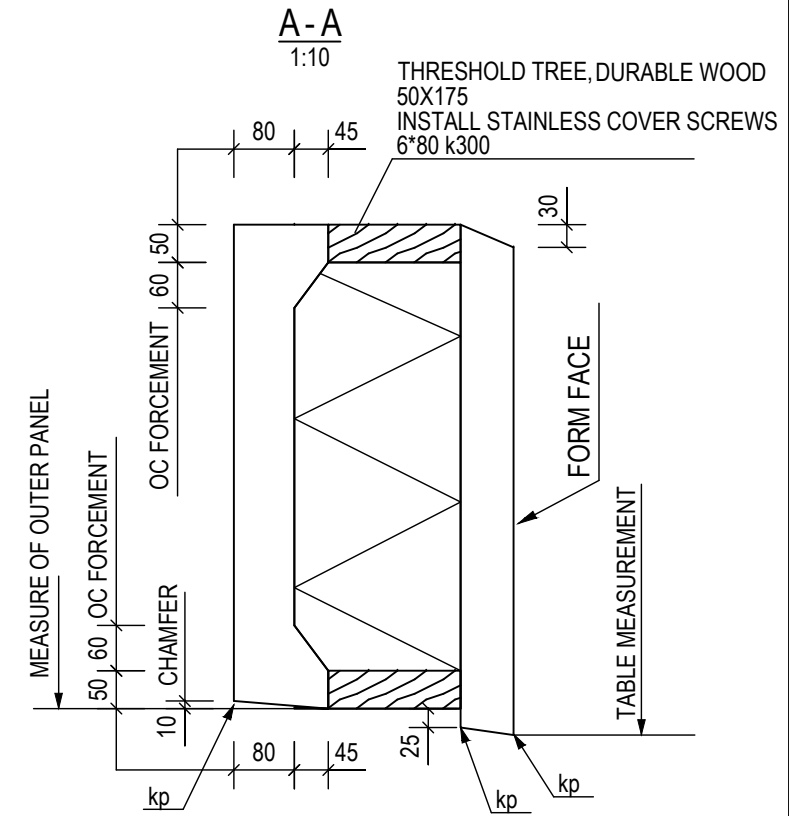
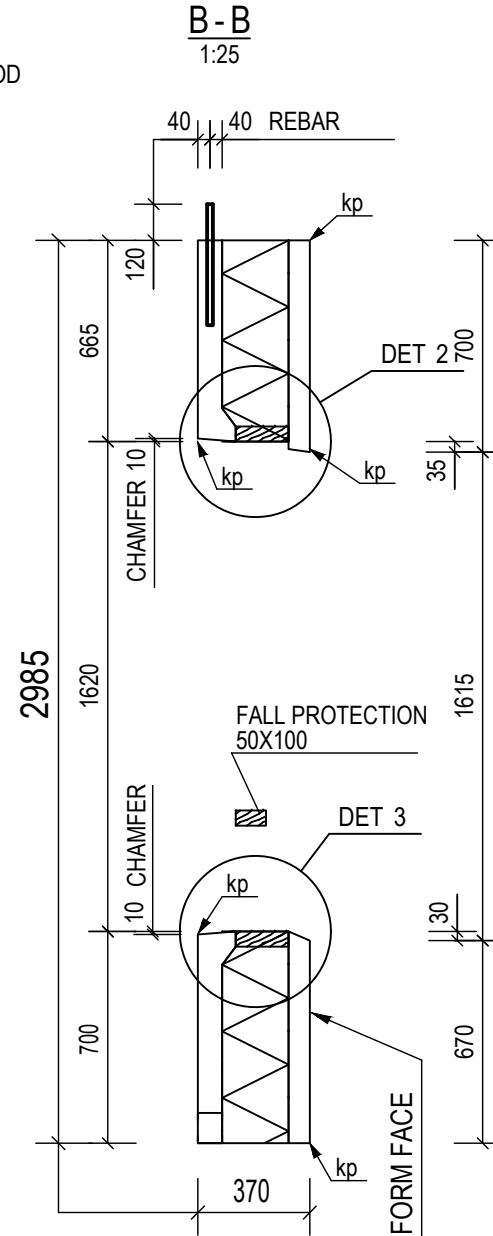
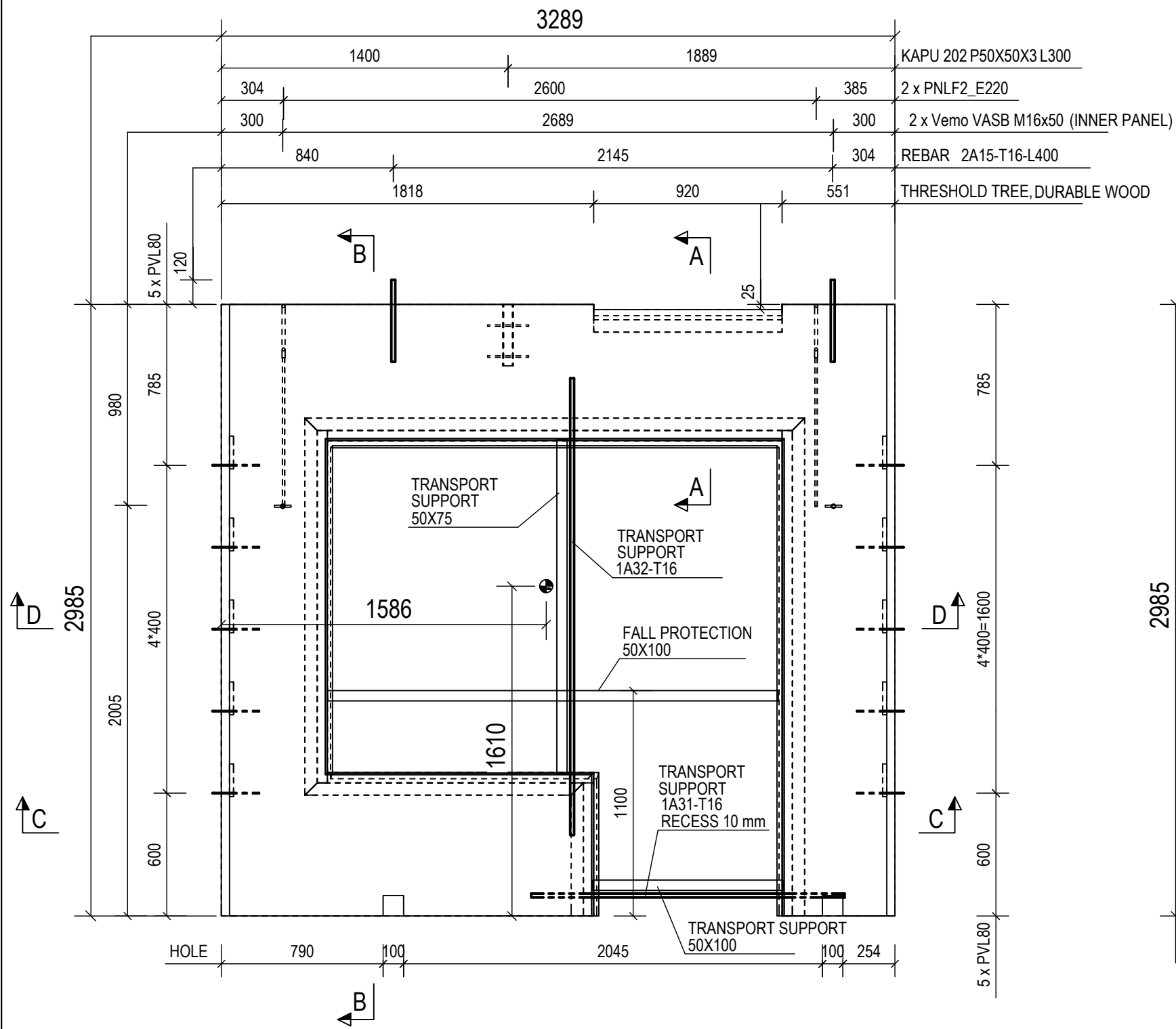
Viewing direction shown in the plan drawing according to the element's ID reading direction from inside to outside.

Normative reference: Wall elements: SFS 7026

The upper part of the element and the window openings will be protected with palstic protective film film will be removed before upper elements installation

Center of Gravity :

PROJECT NAME		DRAWING CONTENT		SCALES	
		ELEMENT DRAWING		1:10	
		R-1, SANDWICH-ELEMENT		1:20	
				1:25	
				1:30	
DRAWER	DESIGNER				
INITIALS	Education + Name				
CHECKER	ACCEPTOR				
Education + Name	Education + Name				
www.office.com		PROJECT NUMBER	SUB NUMBER	DWG. NO.	
Designing office Address PO Box Phone firstname.lastname@office.com				R-1	
		DESIGN GROUP	PAGE	DATE	REVISION
		STR	1/5	20.03.2020	



PROJECT NAME	PROJECT NUMBER	SUB NUMBER	DWG. NO.
R-1	STR	2 / 5	R-1
		DATE	REVISION
		20.03.2020	

REINFORCING BAR LIST													0			
REINFORCING BARS				D	L	dL	WEIGHT	BENDING DIMENSIONS [mm]						COMMENT		
TYPE	POS	PCS	GRADE	[mm]	[mm]	[mm]	YHT [kg]	a	b	c	d	e	u	v	x	TD
A	1	3	B600KX	7	600		0.5	600								
A	2	1	B600KX	9	2700		1.3	2700								
A	3	1	B600KX	9	2140		1.1	2145								
A	4	1	B600KX	9	1540		0.8	1540								
D	5	1	B600KX	9	1490		0.7	520	499	520						54
D	6	1	B600KX	9	1590		0.8	520	598	520						54
D	7	1	B600KX	9	1250		0.6	520	490	290						54
A	8	1	B600KX	9	2510		1.2	2505								
A	9	1	B600KX	9	1510		0.8	1510								
A	10	1	B600KX	9	1740		0.9	1738								
A	11	2	B600KX	9	2890		2.9	2885								
A	12	1	B600KX	9	1620		0.8	1618								
B	13	2	B600KX	9	1020		1.0	520	520							54
B	14	1	B600KX	9	790		0.4	520	290							54
A	15	2	B500B	16	400		1.3	400								
A	16	1	B500B	10	2150		1.3	2150								
A	17	1	B500B	10	2750		1.7	2750								
A	18	1	B500B	10	1540		1.0	1540								
D	19	1	B500B	10	1610		1.0	520	621	520						46
D	20	1	B500B	10	1420		0.9	520	432	520						46
D	21	1	B500B	10	1180		0.7	520	449	260						46
A	22	1	B500B	10	1670		1.0	1673								
A	23	1	B500B	10	1510		0.9	1510								
A	24	1	B500B	10	2530		1.6	2535								
A	25	2	B500B	10	2890		3.6	2885								
A	26	1	B500B	10	1580		1.0	1578								
B	27	1	B500B	10	760		0.5	520	260							46
B	28	2	B500B	10	1020		1.3	520	520							46
A	30	3	B500B	10	600		1.1	600								
A	31	1	B500B	16	1530		2.4	1530								
A	32	1	B500B	16	2230		3.5	2230								

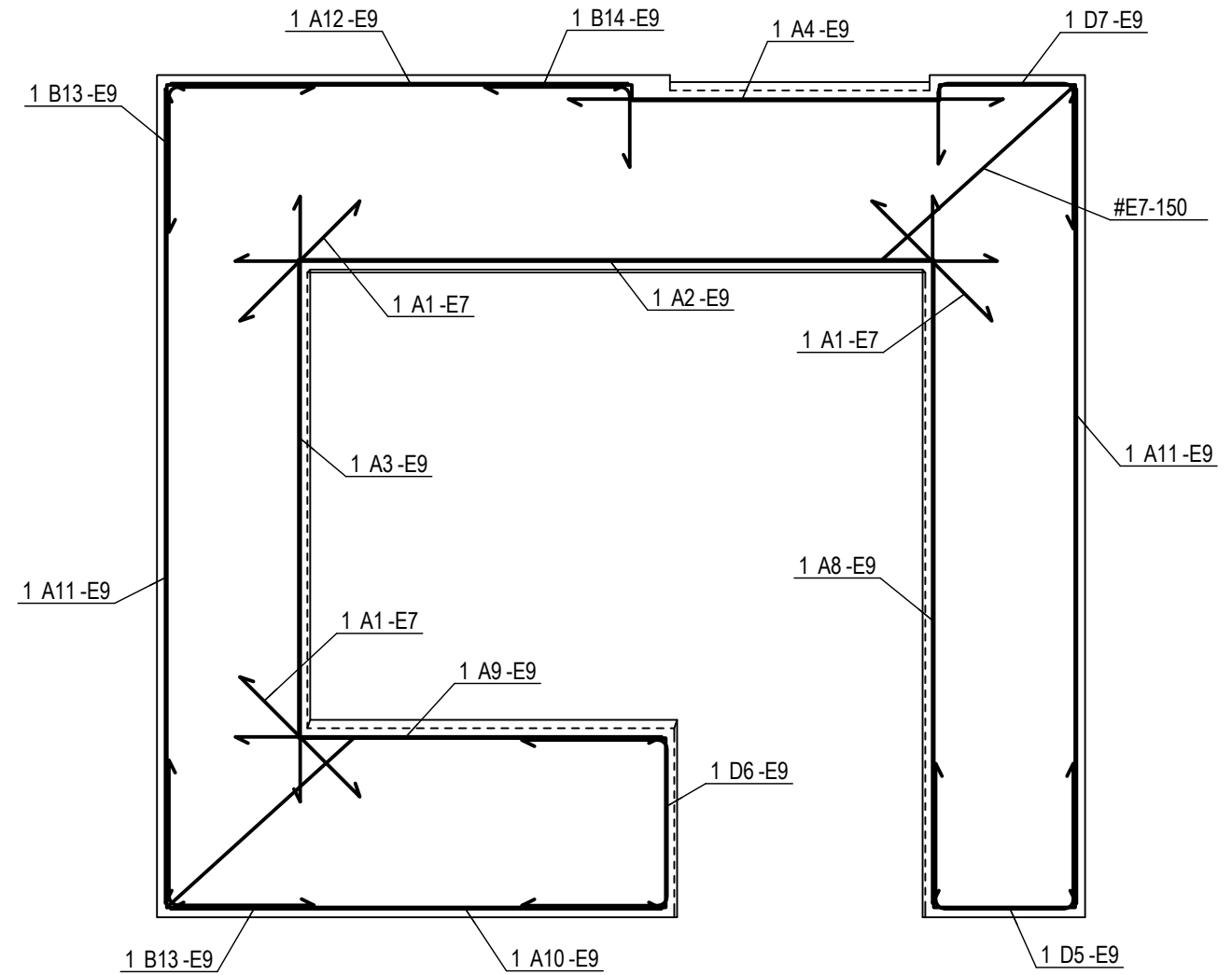
REINFORCING BAR TOTAL WEIGHT [kg]: 38.5

REINFORCEMENT MESH LIST						
POS	PCS	GRADE	NAME	kg/MESH	kg/SUM	
R-15	1	B600KX	3219 x 2915	UK	20.1	20.1
R-29	1	B500K	3159 x 2935	SK	25.0	25.0

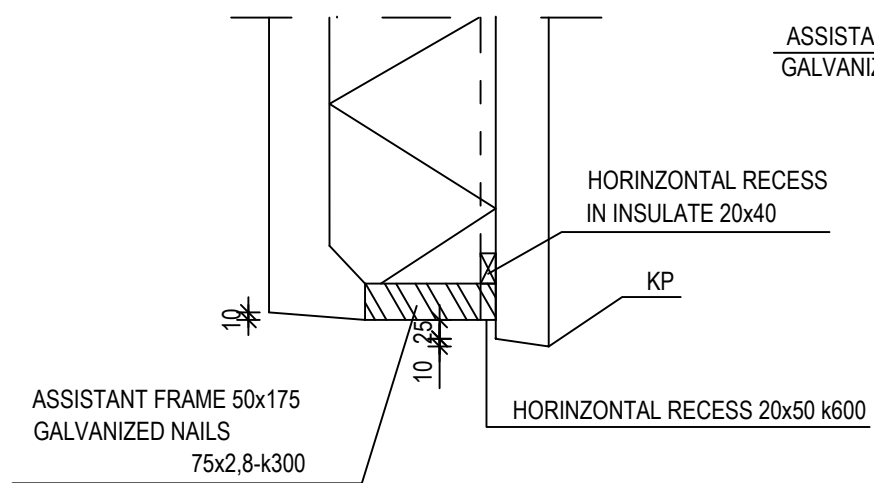
REINFORCEMENT MESH TOTAL WEIGHT [kg]: 45.1

REINFORCEMENT EXAMPLE

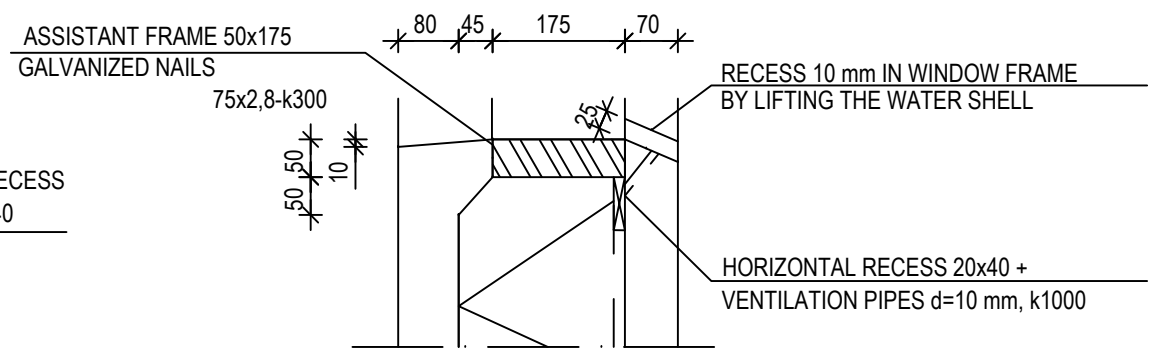
OUTER PANEL REINFORCEMENT



DET 2
1:10



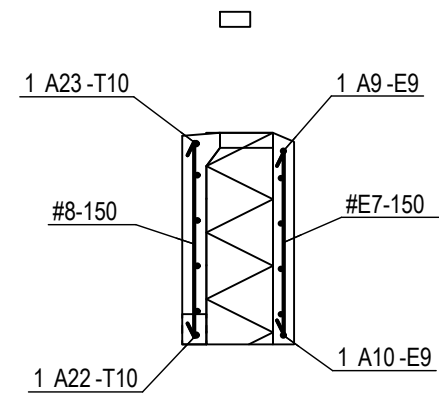
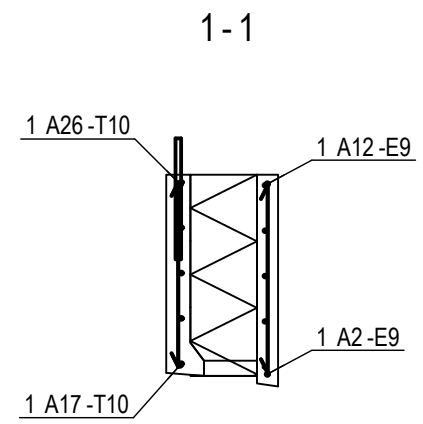
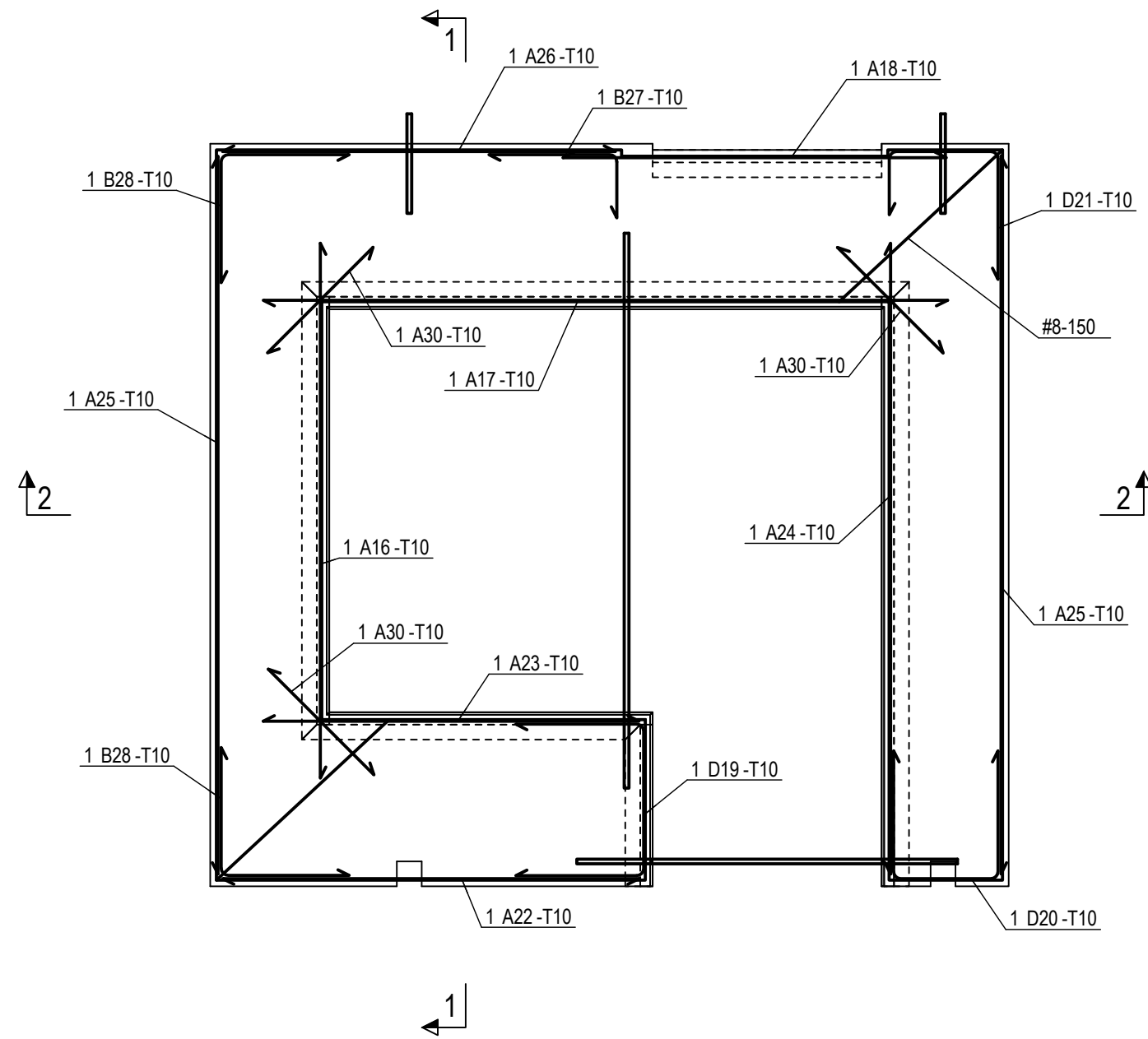
DET 3
1:10



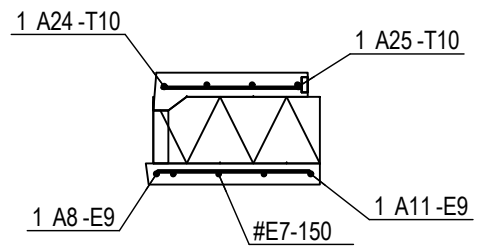
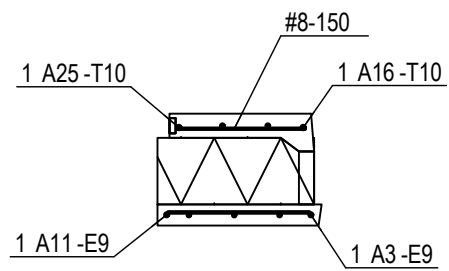
PROJECT NAME	PROJECT NUMBER	SUB NUMBER	DWG. NO.
R-1			R-1
DESIGN GROUP	PAGE	DATE	REVISION
STR	3 / 5	20.03.2020	

REINFORCEMENT EXAMPLE

INNER PANEL REINFORCEMENT

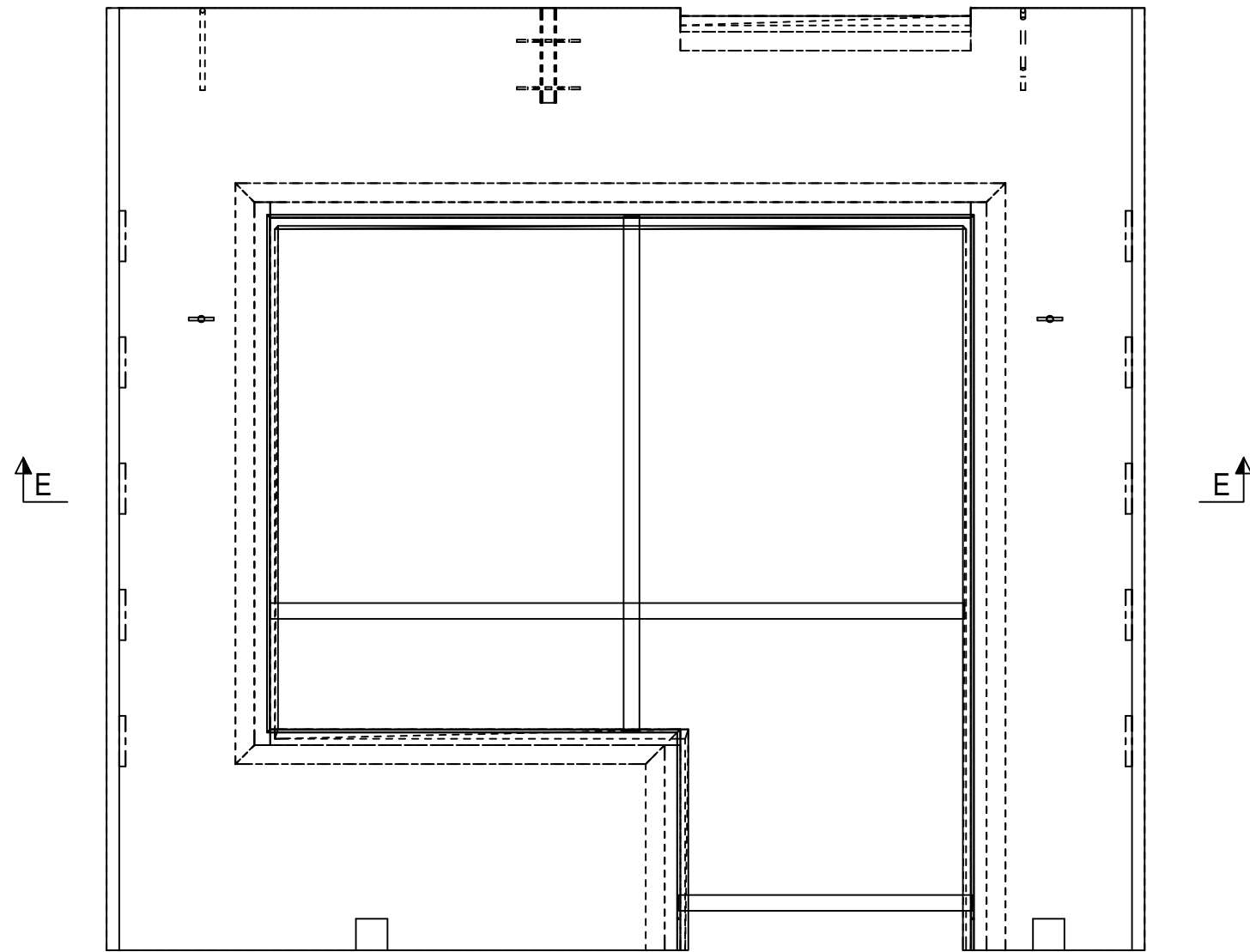


2-2
1:25

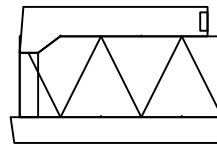
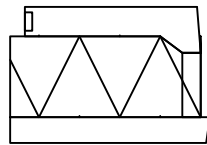


PROJECT NAME R-1	PROJECT NUMBER	SUB NUMBER	DWG. NO. R-1	
	DESIGN GROUP STR	PAGE 4 / 5	DATE 20.03.2020	REVISION

FOR THE MARKING OF ELECTRICAL ACCESSORIES
1:20



E-E
1:20



NO ELECTRICAL ACCESSORIES
DD.MM.YYYY

ELECTRICAL DESIGNER
Address
Phone
firstname.lastname@address.com

PROJECT NAME R-1	PROJECT NUMBER	SUB NUMBER	DWG. NO. R-1	
	DESIGN GROUP STR	PAGE 5 / 5	DATE 20.03.2020	REVISION